



MINH LAM BUILDING

# OUR COMPANY PROFILE

# PROFILE

Founded in 2006, MLBuilding is a general contractor and construction project management company with a strong experience in building commercial, industrial and office spaces.

Through the years, we became real experts in the renovation of building, thanks to our super skilled team and our strong years of experience. Our sub-contractors are selected carefully, according to their levels of expertise but also their values, that must fit our company goals. We only propose good quality equipment and material, that fits with our long-term Good relationship is the key of our success, this is why it matters a lot to us to communicate and explain everything to our clients. We are committed to bring every project to its successful completion by meeting our clients requirements - deadline, budget and quality - and by sharing our knowledge and expertise.

MLB owes its success to its management expertise, which is greatly appreciated by our clients who continue to use our services as they expand. Our relationship with our clients is as important as the projects themselves.

Office:

21 Street No.3, Quarter 5, Hiep Binh Chanh Ward,  
District Thu Duc, HCMC.

Warehouse 1:

414/6 QL 13, W. Hiep Binh Phuoc,  
District Thu Duc, HCMC.

Warehouse 2:

68 Street No.14, Quarter 5, Hiep Binh Chanh Ward,  
District Thu Duc, HCMC.

Tel 1: (028) 3726 2227

Tel 2: (028) 3726 2088

info@mlbuilding.com

www.mlbuilding.com





# MAROU CHOCOLAT

District Thu Duc, HCMC

Area: 1,000m<sup>2</sup>

Tasks:

Office built

Factory renovation

Electric & Data system

AC installation





# MAROU CHOCOLAT (EXTENSION)

District Thu Duc, HCMC

Area: 1,000 m<sup>2</sup>

Tasks:

Offices refurbishment

Factory renovation

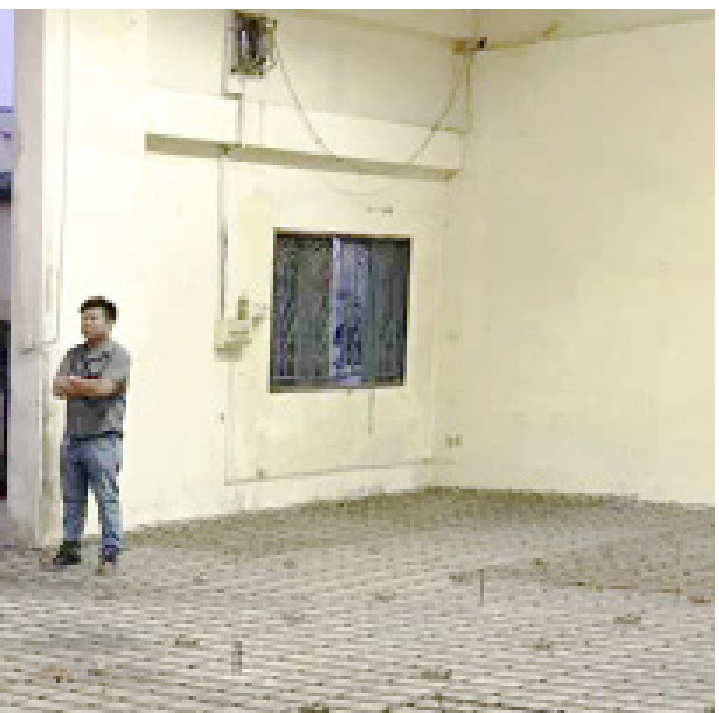
Electric & Data system

Floor and ceiling repairs

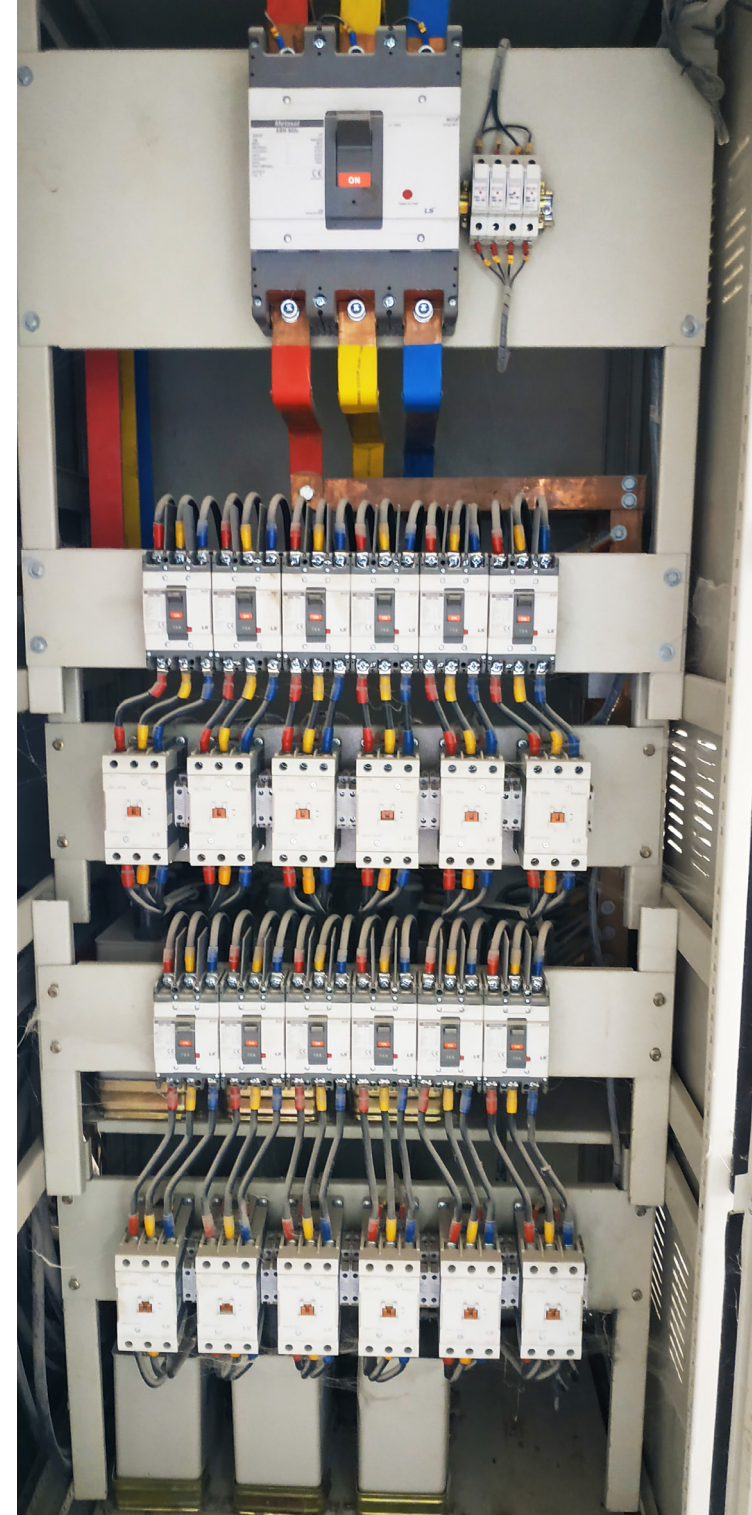
AC installation













# SAIGON HERITAGE FACTORY

W.Tan Thuan Dong, District 7, HCMC

Area: 3,000 m<sup>2</sup>

Tasks:

Factory and office expansion

New office construction

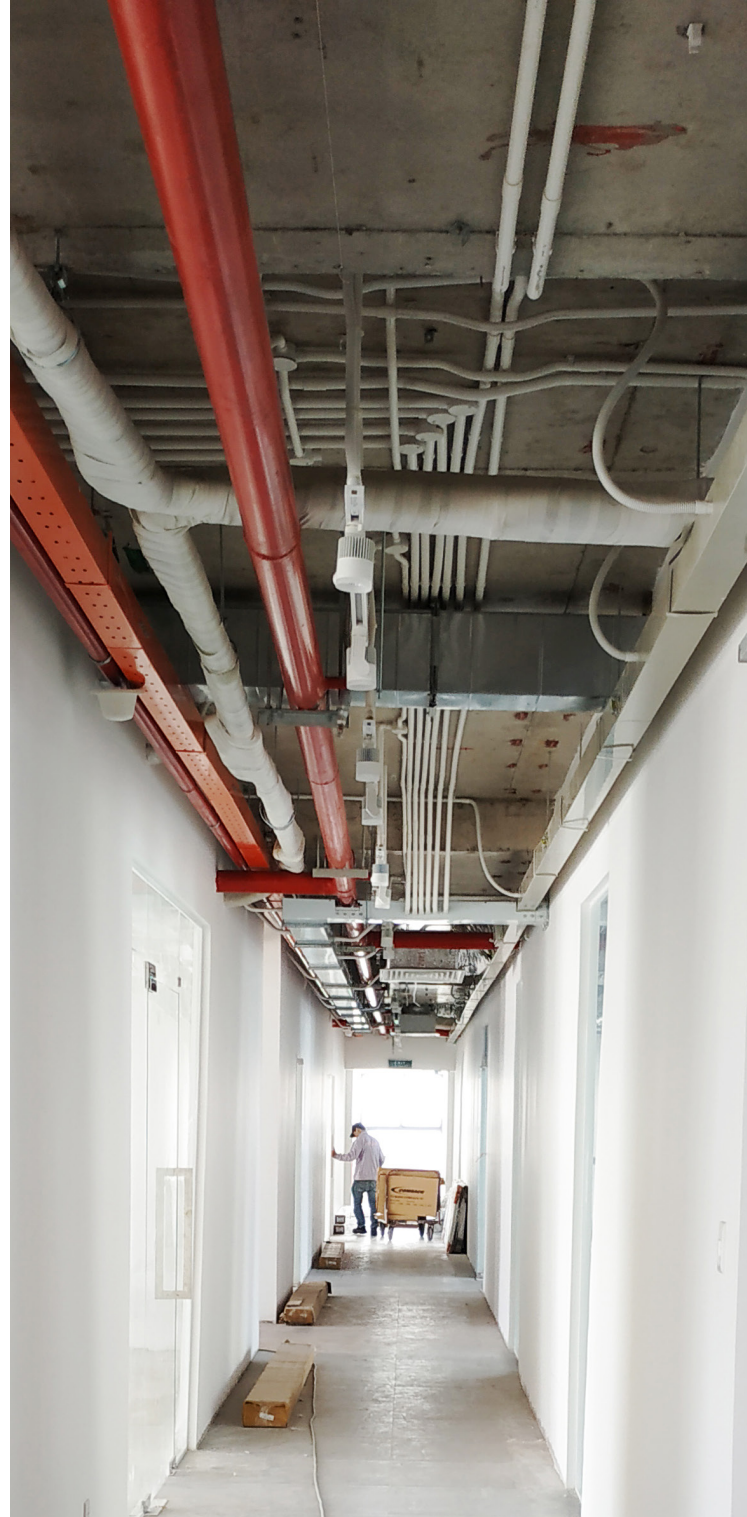
Old office repairs

Electrical networks

Furniture supply









# MEKONG FURNITURE

Thu Dau Mot City, Binh Duong Province

Area: 36,000m<sup>2</sup>

Tasks:

Electrical networks

Generator system

Transformer system

Air-con split system, air compressor system

Construction of compressor room,  
stockroom, maintenance room, and lavatories





# MEKONG FURNITURE (EXTENSION)

Thu Dau Mot City, Binh Duong Province

Area: 20,000m<sup>2</sup>

Tasks:

Electrical networks

Generator system

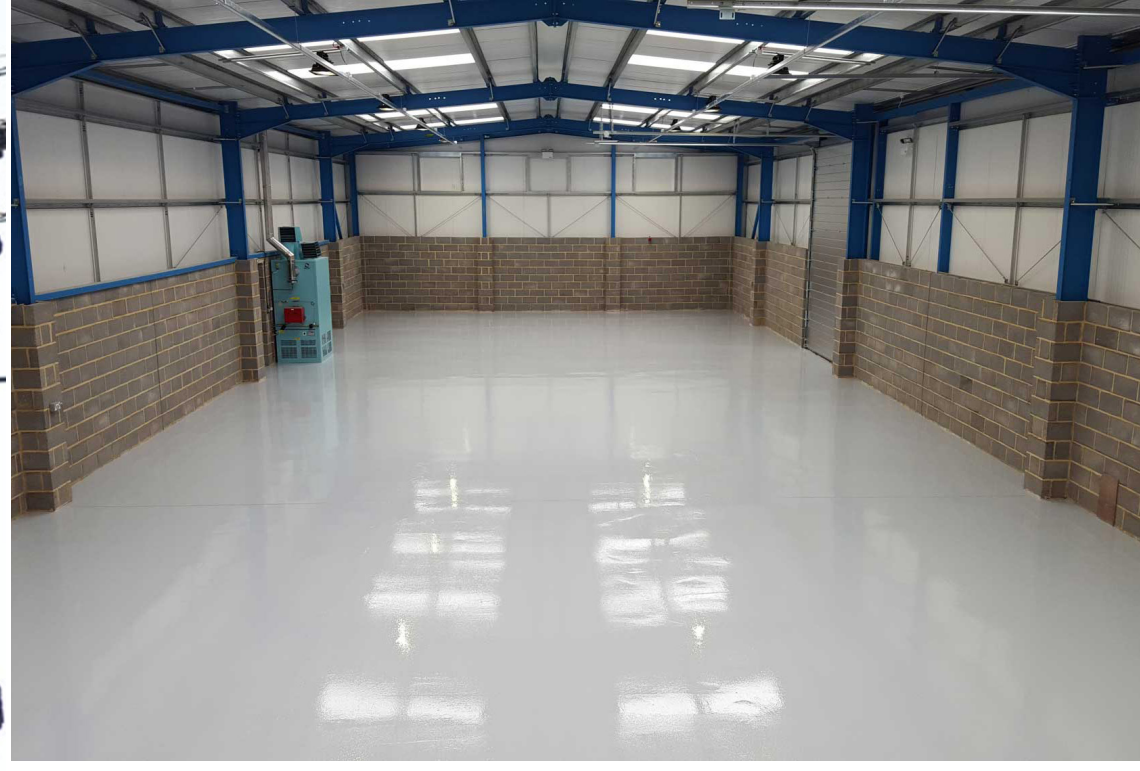
Transformer system

Air-con split system, air compressor system

Construction of compressor room,  
stockroom, maintenance room, and lavatories













# LE BOUCHER

District Tan Tru, Long An Province

Area: 6,000m<sup>2</sup>

Tasks:

Factory construction

Fire systems

Electric system

ACMV system

Plumbing system

WWTP system

Lighting system

Cold room



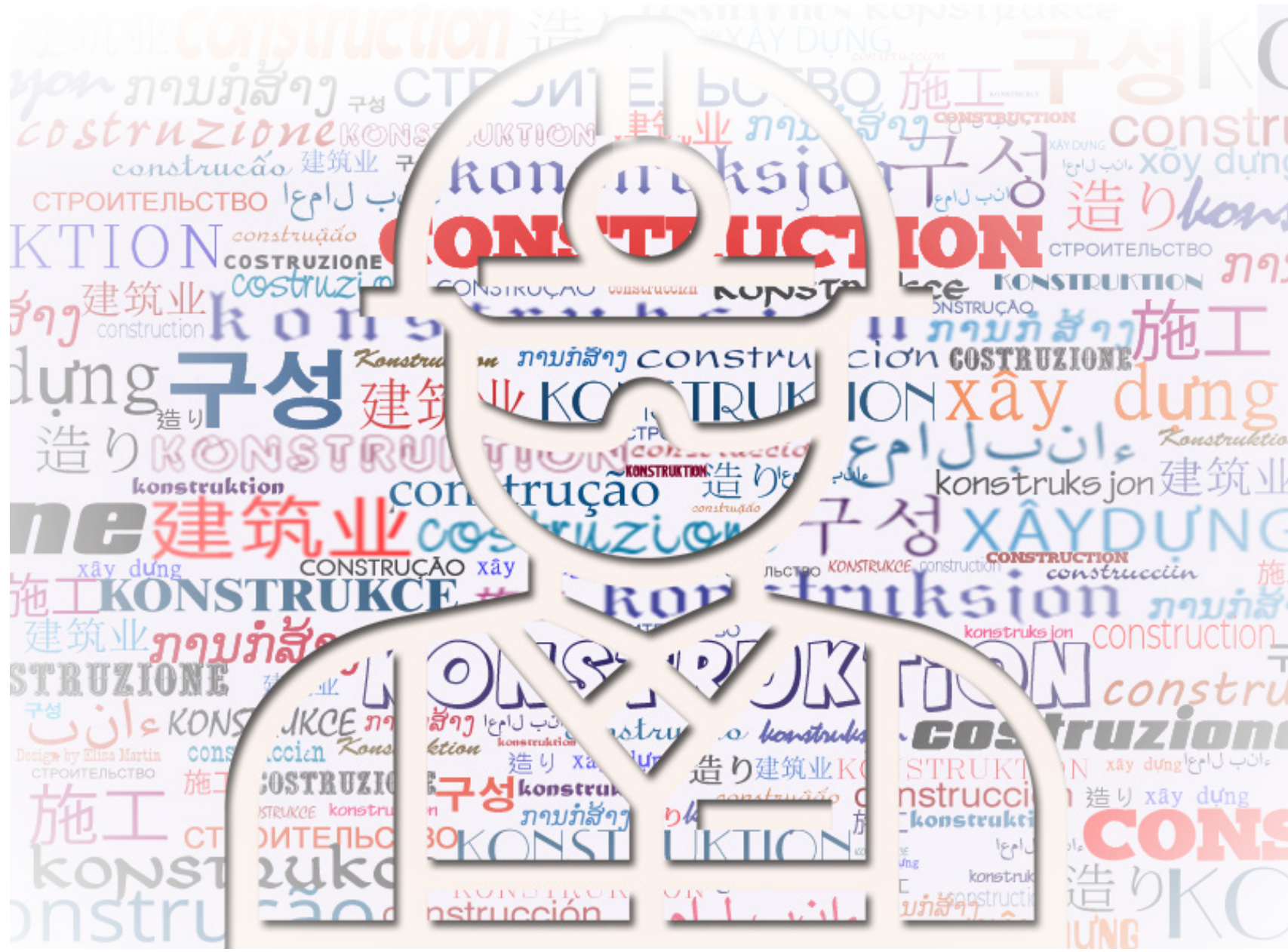






## OUR CLIENTS

Our customers are coming from all over the world.





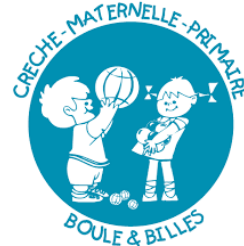
# OUR CLIENTS



"Minh Lan's expertise, dedication and enthusiasm in advising Gameloft during the period of designing and fitting out of our office is a testimony of the successful conclusion we have achieved today."



Centre Medical International  
People at heart



KANTAR WLRDPANEL

